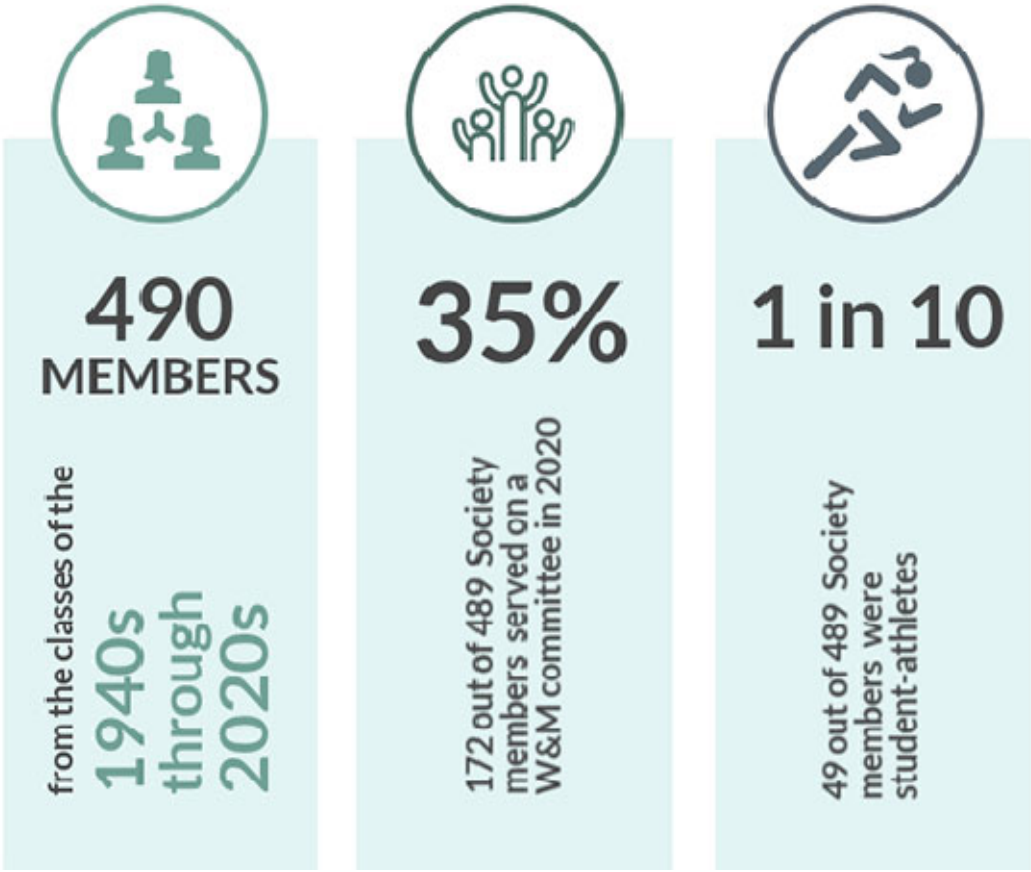




Welcome to the seventh edition of the Society of 1918 e-newsletter!



Happy International Women’s Day! The theme of this celebratory day this year is

“Choose to Challenge.” The theme urges us to challenge and call out gender bias and inequality and to seek out and celebrate women’s achievements — a theme that I think represents well the vision for the Society of 1918.

Speaking of inequality, historically women athletes everywhere have not received opportunities commensurate with their male counterparts. Movies like “A League of Their Own,” “Love & Basketball” and “Battle of the Sexes” have all called this out. While the passage of Title IX in 1972 assured equity, decades of inequality take time to undo. One of our very own Society members has provided an opportunity that will allow W&M to step up to this challenge in short order. I hope you’ll read the upcoming news about the Women in Action campaign and consider how you might participate in this challenge. On behalf of the Society, we offer our thanks to our member and anonymous donor for this gift that will help drive W&M toward equitable opportunities for our women athletes.

Speaking of celebrating women’s accomplishments and contributions, in recognition of women who serve in the U.S. military, the Steering Committee approved a new \$5,000 membership rate for veterans and current service members. Now THAT is a way to celebrate women’s achievements. I hope you will [join us on March 18 at 4 p.m.](#) for a virtual program highlighting four W&M women who serve.

The Society of 1918 can take pride in leaning into the 2021 International Women’s Day charge to address inequality and celebrate women’s achievements.

On a sad note, I am sorry to report that in light of the COVID-19 pandemic, we made the difficult decision to postpone W&M Women’s Weekend from this coming September to September 2022. The good news is that we were well into our planning and now we have even more time to make it an awesome weekend. In our inaugural weekend, nearly 500 women attended. We are shooting for 1,000 in 2022!

We look forward to seeing everyone at our upcoming events, especially the Society of 1918 [annual gathering on March 19](#).

Val

Valerie Cushman
Senior Director of Engagement & Inclusion Initiatives

WELCOME TO OUR NEW MEMBERS!

Dr. Suzanne Eacker Curran '88
Ivana Michelle Marshall
Frances G. McGlothlin '66
Janet Brown Strafer '71, M.Ed. '77, D.Sc. '18
Karen O. Ely '71, D.Sc. '18
Lynn Fontanne Briley '71, D.Sc. '18
Sharon Fanto Smith M.B.A '15
Rae Worley Sawyer '67, M.A. '69

SOCIAL JUSTICE AS A UNIVERSITY PRIORITY

William & Mary faculty and students have long engaged in acclaimed research and programs to advance the cause of social justice. But as we witness the disproportionate effect of a national pandemic on communities of color, violence against Black and Brown people, and a collective popular uprising against centuries of racial injustice, we recognize that we can — and must — harness our resources and talents to do more. As President Katherine Rowe has [urged](#), we must accelerate our work to combat injustice and racism, to "make a meaningful difference in our communities, the state, the nation, and the world."

The Center for Racial & Social Justice will work to advance the cause of racial and social justice by educating students and the broader community, building students' capacity to engage in antiracist and social justice work, and engaging in legal and multidisciplinary research and advocacy aimed to inform the public, advocates and policymakers — both in the Commonwealth of Virginia and nationwide. [Learn more about the Center and its founding.](#)

PAST SOCIETY OF 1918 EVENT



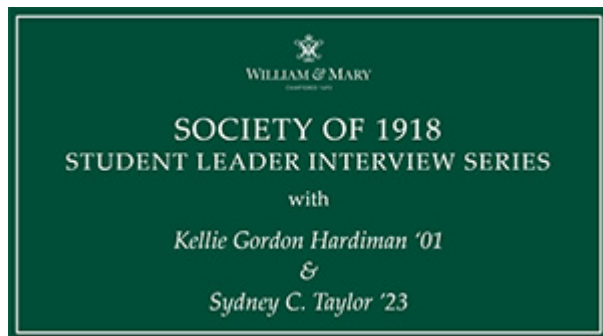
Expedition Nepal

In 2019, a team of fisheries biologists from VIMS, led by Professor Mary Fabrizio, traveled to Nepal to study the country's freshwater fishes. Along the way they learned a great deal about the rewards and challenges associated with conducting international research. Join us as Professor Fabrizio provides a firsthand account of the expedition — from extreme heat to wild rhinoceros encounters — and what they hope to discover with the information they gathered. [Watch the recording!](#)

SOCIETY OF 1918 ALUMNA-STUDENT INTERVIEWS

Kellie Hardiman '01 and Sydney Taylor '23

Members of the Leadership Committee of the Society of 1918 dedicate much of their time to uncovering the stories of William & Mary leaders. Their latest project involves interviews between alumnae and current student leaders. [Watch the first of many](#) in this conversation with Kellie Hardiman '01, former track athlete, and Sydney Taylor '23, current volleyball player.



UPCOMING EVENTS

Women's Health Series | Improving Maternal Health

MARCH 9, 2021 | 4 p.m. ET

Join us as health experts explore increases in U.S. maternal deaths over the last two decades, pronounced racial disparities in maternal mortality and the interventions that can reverse these trends. President Katherine Rowe will introduce First Lady of Virginia Pamela Northam for a keynote address, followed by a panel discussion moderated by Rachel Becker '19, policy advisor to the secretary of health and human resources. Panelists include W&M Professor Claire McKinney; Dr. Camille Hammond, CEO of the Cade Foundation; Kelly Cannon '05, senior director for Virginia Hospital and Healthcare Association; and Dr. Vanessa Walker Harris, deputy secretary of health and human resources for Virginia.

REGISTER

Celebrating W&M Women and Military Service

MARCH 18, 2021 | 4 p.m. ET

During Virginia's Women Veterans Week, join us as we celebrate W&M women who are serving or have served in the military. Hear stories of service from a panel of alumnae and a current W&M ROTC cadet moderated by the Honorable Caryn Wagner '79. Then learn about what W&M is doing to support our veterans from the special assistant for military and veterans affairs. We will also hear about the [Military Women's Memorial](#), located at the entrance of Arlington National Cemetery.

REGISTER

Society of 1918 Inspiring Change: For You. For W&M

MARCH 19, 2021 | 9:30 a.m. - 3:30 p.m. ET

Join sister Society members in a daylong programmatic treat. We will begin with a State of the Union from our fearless chair, Janet Atwater '84, P '17, P '20, hear a presentation from the Center for Creative Leadership on polarity thinking, participate in a workshop led by Executive Director of the Miller Entrepreneurship Center Graham Henshaw about

design thinking, and close with casual breakout rooms between Society members. You won't want to miss one second — be sure to register in advance!

REGISTER

Society of 1918 Virtual Steering Committee Meeting

MARCH 26, 2021 | 1-3 p.m. ET

An Introduction to the Ancient History & Culture of Santa Fe

MARCH 23, 2021 | 6 p.m. ET

Join expert tour guide Tom Gallegos as he provides a rich introduction to the storied and ancient history of Santa Fe, from its time as an important Native American city to its role in Spanish colonialism. Mr. Gallegos is the featured expert on the W&M Journey "A Sense of Place: Taos & Santa Fe," slated for June 2021. More information about this trip, including how to register, can be found below.

REGISTER

Women's Health Series | Leadership Conversation With President Katherine Rowe and Dr. Susannah Rowe

JUNE 10, 2021

Watch your email inbox for an invitation to join President Katherine Rowe and her sister, Dr. Susannah Rowe, in a conversation on the impact of organizational practices and policies that inhibit or enhance the health of employees. More details to follow!

'A Sense of Place' Alumni Journey, Taos & Santa Fe

JUNE 15-20, 2021

You do not want to miss six days and five nights of travel through the mesmerizing landscapes of Taos or historic Santa Fe. Did we mention that the last day of the trip

includes a walking tour of Georgia O’Keeffe’s home? Find out more and reserve your spot!

REGISTER

THE CALL OF ALMA MATER



Society of 1918 Membership Committee Chair Pamela Jordan Penny '77 and her husband, James D. Penny '83, chose to return to Williamsburg for their retirement. Williamsburg served as a wonderful opportunity to strengthen bonds with others in the W&M community. In the true spirit of honoring Williamsburg’s history and its connections to William & Mary, the Pennys bought the home of former W&M fine arts professor Thomas Thorne. Read more about their decision to retire in Williamsburg and learn about the [Williamsburg Community Action Plan on Aging](#).

READ MORE

SOCIETY OF 1918 MEMBER FEATURES



Lynn Briley '71, D.Sc. '18

Lynn Briley has been an educator for 45 years. She began as an English teacher, then served as a principal at the middle, alternative and high school levels. Since retirement, she began a second career at the community college level where she teaches communication skills to freshman students. She also partners with local organizations that help senior citizens live independently.



**Janet Brown Strafer '71,
M.Ed. '77, D.Sc. '18**

Janet's career took her down many varied paths, including elementary school teacher and counselor in Williamsburg, program director for senior leader development, and branch chief/senior policy analyst at the Pentagon for countering weapons of mass destruction. Concurrently she served 22 years as an officer in the Maryland Army National Guard. Retired since 2014, Janet is devoted to helping family and serving as the lead volunteer for a nonprofit dedicated to rehabilitation of post-9/11 wounded veterans through the game of golf.



Karen Ely '71, D.Sc. '18

Karen Ely's accomplished track record in middle school education transitioned seamlessly into a 30-year career in radiation protection. In her role as a health physicist, Karen is a registered radiation protection technologist. Karen's team has been responsible for all inspecting and permitting of broad scope and specific permits for the medical and research use of radioactive material for the Navy worldwide since 2003. Her ability to teach and lead are huge components of the legacy she is building for her two children and five grandchildren.

The Society of 1918 is committed to growing the engagement, leadership and philanthropy of W&M women.

Our vision is to achieve a level of impact, influence and generosity commensurate with our majority representation in the alumni community.

The Society of 1918 e-newsletter goes out to all members of the society periodically with updates, upcoming events, shout-outs and more. Love it? Have a suggestion? Want to author a blog on women's leadership or philanthropy? Want to submit your information for a member feature? Let me know at ycushman@wm.edu.

Message sent by: W&M Women, William & Mary
PO Box 8795, Williamsburg, VA 23187-8795