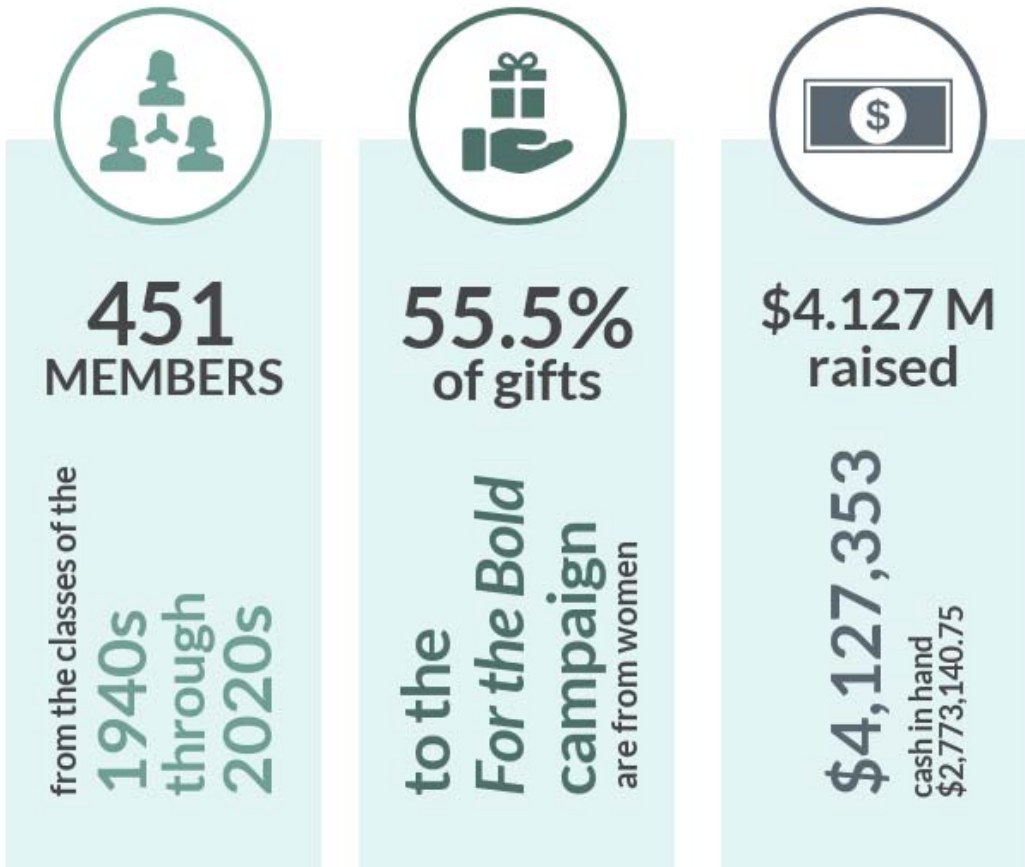




Welcome to the second edition of our Society of 1918 newsletter!



By the Numbers:

Representation of women on advancement leadership boards is the highest in recorded history, now at 40.9%. Onward to 50% or more!

In FY 2019, for gifts under \$100,000, the gap between the average size gift from men versus women is the smallest in recorded history and so far in FY 2020 we're on track to break that record!

Newest Society of 1918 Members:

Sabrina Brinkley '86
Cynthia Page Cobbs '81 JD
Lisa Viviano Henesy '87
Kristen Witte Pippolo '92
Patricia Russell '87
Alyssa Wallace Scruggs '10
Hodan Charles Seager '18
Margaret Williams Stone '86
Elizabeth Ann Wolff '92

And sadly, three of our members have passed.

In memory of Society of 1918 members:

[Susan McMullen Beck Honorary '2001](#)

[Helen Elizabeth "Bee" McLeod '83](#)


Mildred B. West L.H.D. '17

Making a Difference

The Society of 1918 is shedding light on students' wellbeing! Thanks to the contributions of our members, this year the Society of 1918, through the Alumnae Initiatives Endowment, has supported three initiatives that will immediately and positively impact student health and wellness. The society's contributions support initiatives that will bring wellness programming to the residence halls, Tribe Rides that provide transportation for students to off-campus health and wellness appointments, and a light therapy box used for assisting students with Seasonal Affective Disorder, sleep disorders and depression.

The society sponsored a W&M Women event at The Valentine in Richmond on Jan. 21 that attracted a record-setting 100 attendees! William & Mary's own Christina Keyser Vida '05 facilitated a discussion for attendees that evening about the exhibit titled "#BallotBattle: Richmond's Social Struggle for Suffrage."

SHOUTING OUT



A GUIDE TO NONPROFIT BOARD SUCCESS

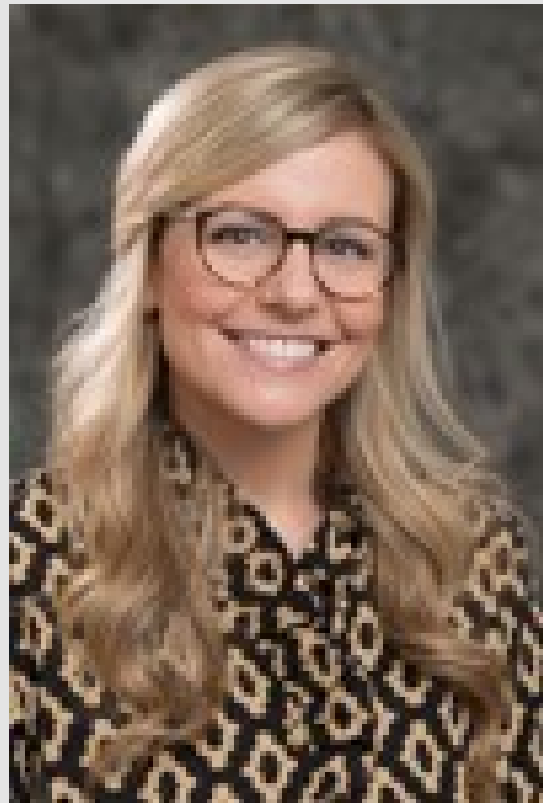


Answering the Call
of Leadership

Cynthia Jarboe

Published Author

A shout out to Cynthia Satterwhite Jarboe '77 P '11 who has recently published a book.

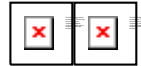


Congratulations

Congratulations to Amy Gray Beck who recently completed her Ph.D. program at Virginia Commonwealth University. Amy's dissertation titled, "Why Women Give To Women: A Portrait of Gender-Based

And a big thank you to Cindy for writing a blog just for our members entitled “ [Answering the Call of Leadership.](#)”

Philanthropy” provides an in-depth look at the evolution of the Society of 1918!



Affording Opportunity

A big shout-out to Society of 1918 member Jean Berger Estes '75 and her husband Robey Estes '74 who've committed \$1.5 million to provide need-based scholarship support to business students.



W&M mom of Meredith Grace Clay '19

Highlighted in a New York Times article for her philanthropy of women's sports. With Cathy's support, the new W&M Field Hockey Center is nearly complete!

[A Welcome Funding Source for College Athletics: Women Investing in Women's Sports](#)



A shout out to mother-daughter Society member duo Eason Weinmann '17 and Brooke Tribble Weinmann '79 who while on a holiday trip to San Juan, Puerto Rico were inspired by these green and gold leaves to honor their alma mater!

UPCOMING EVENTS

- **March 8**, Worldwide: International Women's Day. Learn more about the global progress of women at internationalwomensday.com. Thank you for being a woman who makes a difference!
- **March 20**, Roanoke: W&M Women event, Fralin Biomedical Research Institute. Join W&M Women for a special tour and talk at the Fralin Biomedical Research Institute with Dr. Michael Friedlander. Dr. Friedlander provides leadership for The Roanoke 15,000 project that involves following patient's brain function over the course of their lives. His laboratory focuses on the cellular plasticity processes that underlie learning in the brain in health, during development and after traumatic brain injury.
- **March 27**, Williamsburg: Gather. Grow. Give. spring edition. All members needed! We'll come together in Williamsburg to learn about design thinking that informs decision-making personally and professionally, give back to W&M by offering insights to President Rowe, tour new programs and facilities on campus and most importantly, to engage with and provide guidance to our current students!
- **June 16-21**, Santa Fe: [Santa Fe Alumnae Journey](#). Only two spaces remain open — reserve yours today!

- **October 17, Williamsburg:** Homecoming Parade. The Society of 1918 will be walking in the parade, celebrating the 100th anniversary of women’s right to vote.
- **September 2021, Williamsburg:** W&M Women’s Weekend!



This exclusive silk-blend 60 x 15-inch scarf was designed by Peter-Blair Accessories in Richmond, Virginia, specifically for the 100th anniversary of coeducation at W&M. The first 24 women who arrived on campus as students in 1918 blazed a trail that has allowed future generations of alumnae to thrive. In 1967, the first three African American residential students, all women, courageously integrated W&M’s campus. The names of these women form the center of this scarf, ringed by symbols of Tribe Pride. The scarf also features the W&M Women logo, which was launched for the 100th anniversary of coeducation in 2018. Quantities are limited. \$100

Society of 1918 newsletter! The newsletter goes out to all members of the society periodically with updates, upcoming events, shout-outs and more. Love it? Have a suggestion? Want to author a blog on women’s leadership or philanthropy? Let me know at vjcushman@wm.edu.



Message sent by:

William & Mary

PO Box 8795, Williamsburg, VA 23187-8795

[Update your information](#)

[Unsubscribe](#)